

Crusher

Battery Installation Instructions For Machines With Bottom Access Panels

WARNING: *Disconnect the power to the Crusher Pitching Machine while installing batteries! Failure to do so may result in bodily injury.*

STEP 1: Locate both battery compartments on the bottom side of the Fireball pitching machine.

Unscrew the holding screw for one or both compartments.
(Each compartment holds a 4 hour battery for a total of 8 hours)



STEP 2: Locate the **Red** and **Black** battery wires inside the battery compartment.

Each battery compartment will have a pair of Red and Black wires.



STEP 2: Connect the **Red** wire to the "RED Colored" battery post and the **Black** wire to the "BLACK Colored" battery post.

The Crusher will run on either one battery or both batteries.

Place the battery back into the compartment, replace the cover, and tighten the holding screw.



CRUSHER BATTERY INSTALLATION INSTRUCTIONS

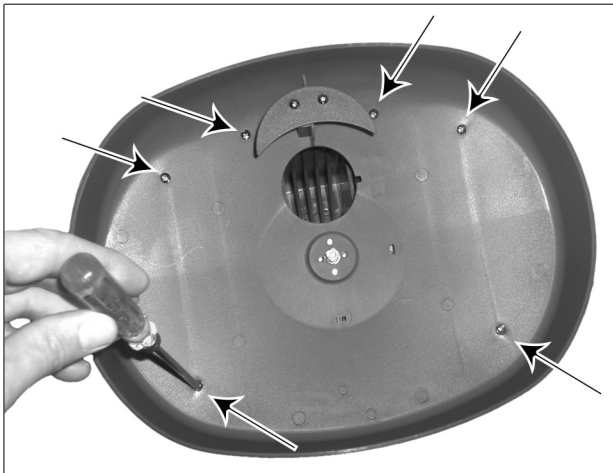
FOR MACHINES WITHOUT BOTTOM ACCESS PANELS

Step 1:

WARNING: Disconnect the power to the Crusher Pitching Machine while installing batteries! Failure to do so may result in bodily injury.

Step 2:

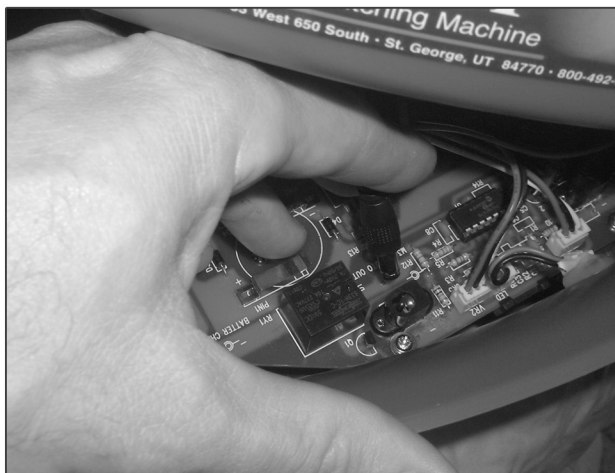
Using a screwdriver, remove the six screws (as indicated in the photos) that attach the ball feeder/hopper to the Crusher housing.



Step 3:

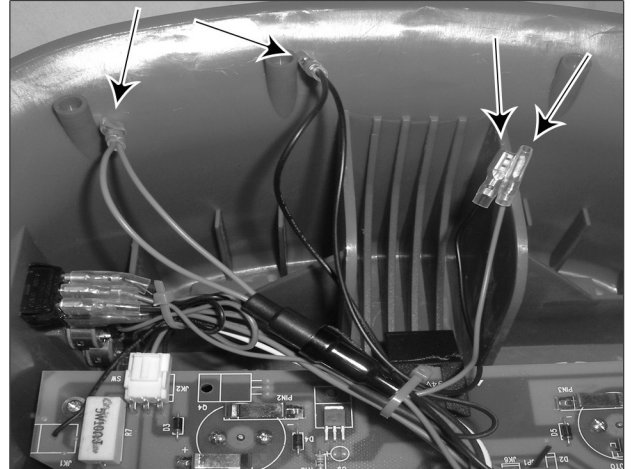
After removing the screws, separate the ball feeder/hopper from the housing.

CAUTION: As you remove the ball feeder/hopper you must reach inside the housing to disconnect the ball feeder/hopper power cable from the circuit board. Pull up carefully on the connector to disconnect.



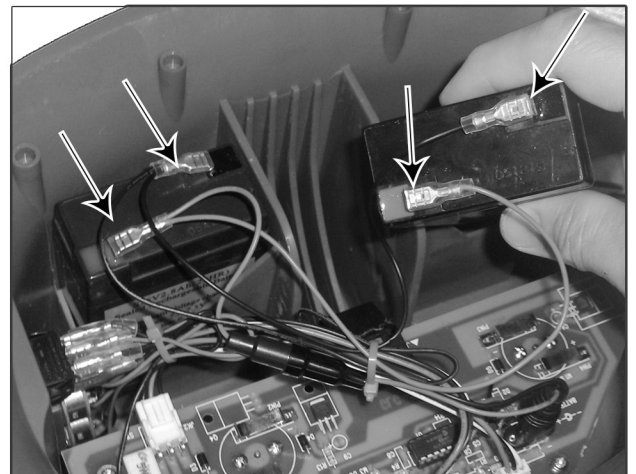
Step 4:

Locate the four battery wires as shown in the photo. (There are four battery connectors, two attached to red wires & two attached to black wires)



Step 5:

Connect the battery wires to the batteries as shown. Make sure to connect RED wires to the RED prong on the battery and the BLACK wires to the BLACK prong on the battery. **WARNING:** Do not allow the battery wires to touch the circuit board or the RED wires to touch the BLACK wires. This may result in damage to the pitching machine.



For single battery installation use one set of battery wires. Make sure the remaining wires do not touch each other, the circuit board or interfere with the ball feeder alley.

Step 6:

Place the batteries in the Crusher housing slots and reattach the ball feeder/hopper power cable to the circuit board. Reattach the ball feeder/hopper to the housing and tighten all six screws.