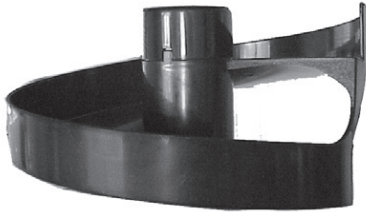


Heater[®] **PowerAlley Ball Feeder**

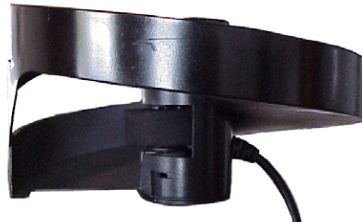
PARTS LIST

(A)



Top Spiral (Qty 1)

(B)

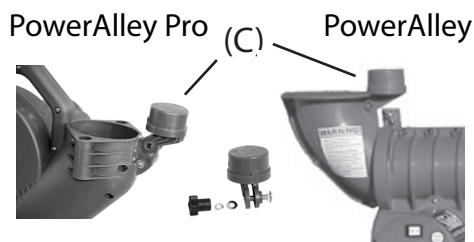


Spiral Ball Feeder (Qty 1)

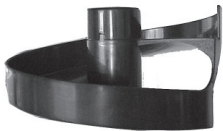
(C)



Feeder Port (Qty 1)



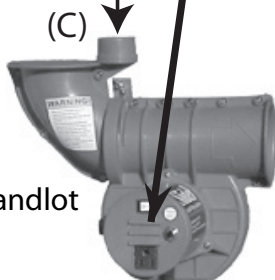
(A)



(B)



(C)



Sandlot

INSTRUCTIONS

Step 1: Place the Feeder Port (C) on to the Feeder Port Bracket on the pitching machine. Replace the large washer, lock washer, and Knob in that order.

Step 2: Slide Spiral Ball Feeder (B) on to Feeder Port on Housing (C). Slide Top Spiral (A) onto Feeder Port On Spiral Ball Feeder (B). Plug in Spiral Ball Feeder Cord into Ball Feeder Outlet located on the side of the Pitching Machine Housing (C).

IMPORTANT

DO NOT RETURN THIS PRODUCT TO THE RETAIL STORE WHERE PURCHASED. CALL TOLL FREE: (800) 492-9334.

WARNING: ONLY USE HEATER LITE-BALLS WITH THE POWERALLEY LITE-BALL PITCHING MACHINE. YOU CAN USE BOTH LITE-BALLS AND REAL BALLS WITH THE POWERALLEY PRO PITCHING MACHINE.

The PowerAlley Lite-Ball Pitching Machine only uses Heater Lite-Balls. If you put real baseballs in the PowerAlley Lite-Ball Machine you will damage the machine and void the warranty. Heater Sports recommends only using official Heater Soft Lite-Balls in your PowerAlley Lite-Ball Pitching Machine. These balls are incredibly accurate, long lasting, and produce the best performance in the machine.

WARNING: PITCHING MACHINES ARE TO BE USED BY ADULTS ONLY. MAKE SURE THE MACHINE IS TURNED OFF BEFORE ASSEMBLY! KEEP HANDS AND ALL BODY PARTS AWAY FROM BALL ENTRY AND EXIT! SERIOUS HAND, EYE, AND BODILY INJURY MAY OCCUR IF USED INCORRECTLY!

CUSTOMER SERVICE

Heater Sports is dedicated to your customer satisfaction. If you experience any trouble with the operation of the PowerAlley Ball Feeder contact us at: **(800) 492-9334** or log on to our website at **www.HeaterSports.com**.

Heater[®]
SPORTS