



# OWNER'S MANUAL

## Power Alley<sup>®</sup> 360 Lite Baseball Pitching Machine

[www.HeaterSports.com](http://www.HeaterSports.com)

**Model No. PA99**

**Serial No. \_\_\_\_\_**

Write the serial number in the space above for reference.

### ACTIVATE YOUR WARRANTY

To register your product and activate your warranty, call 1-800-492-9334

### CUSTOMER CARE

For customer service inquiries, please call our toll free line at 1-800-492-9334.

### CAUTION

Read all precautions and instructions in this manual before using this product. Keep this manual for future reference.

Instructions Date: 03/2022

Version: PL001



**DO NOT RETURN TO STORE, CALL 1-800-492-9334**

# Read Before Operating!

## IMPORTANT

**DO NOT RETURN THIS MACHINE TO THE RETAIL STORE WHERE PURCHASED.  
CALL TOLL FREE: (800) 492-9334.**

### WARNING: ONLY USE HEATER LITE-BALLS IN THIS MACHINE

This Machine only uses Lite-Baseballs. **IF YOU PUT REAL BASEBALLS IN THIS LITE-BALL MACHINE YOU WILL DAMAGE THE MACHINE AND VOID THE WARRANTY.**

Heater Sports recommends only using official Heater Lite-Balls. These balls are incredibly accurate, long lasting, and produce the best performance in the machine.

THIS PRODUCT IS TO BE USED BY ADULTS ONLY. MAKE SURE MACHINE IS TURNED OFF BEFORE ASSEMBLY! KEEP HANDS AND ALL BODY PARTS AWAY FROM BALL ENTRY AND EXIT! SERIOUS HAND, EYE, AND BODILY INJURY MAY OCCUR IF USED INCORRECTLY!

- Please be sure to read all of the instructions before using the Pitching Machine to ensure the machine is working properly.
- The Slider is not a toy and an adult should supervise children. It is very important the batter makes sure the area is clear before swinging a bat.
- Stay clear of the ball opening while this is operating. Although the balls are very light, they may cause eye damage or other injury may occur. Children must be advised of this danger and appropriate precautions should be taken.
- **DO NOT** use any type of ball other than Heater Lite-Balls in this machine.
- Always use a NOCSE approved batting helmet when batting.
- **DO NOT LOOK INTO THE FRONT OF THE MACHINE WHILE THE MACHINE IS RUNNING.**

# PARTS

*\*Replacement Parts Available by Calling Heater Sports*



Housing  
(A)



Tripod  
(B)



Top Pole  
(No Pushpins)  
(C)



Top Leg  
(D) 3x



Bottom Leg  
(E) 3x



Top Pole  
Hardware  
(F)

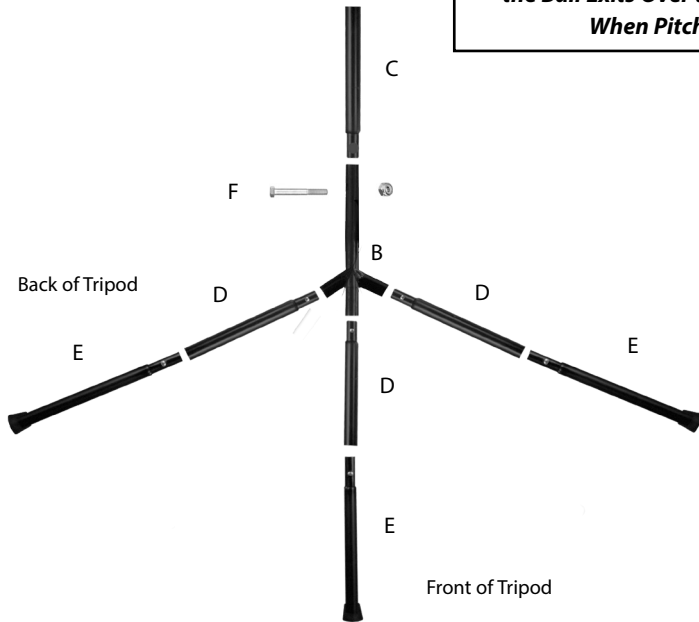


Ground Stakes  
(G) 2x

# TRIPOD ASSEMBLY

Insert Top Legs (3x D) in to bottom of Tripod (B), making sure the push pins lock in place. Next, insert Bottom Leg (3x E) in to bottom of Top Legs (D), also making sure push pins lock in place. Lastly, insert Top Pole (C) into the top of Tripod (B), securing it tightly with Top Pole Hardware (F).  
 \*For added stability on soft surfaces, position the Ground stakes (2x G) on the back legs to lock in place.

**\*IMPORTANT:**  
 Make Sure the Machine is Mounted so the Ball Exits Over the Front Leg When Pitching!

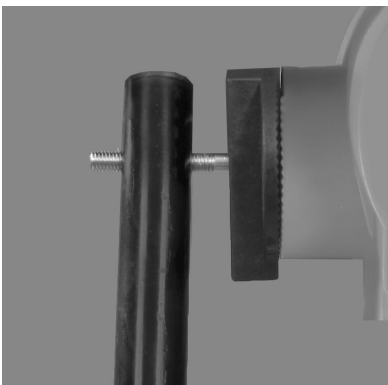


**Front View**



**Side View**

# HOUSING ASSEMBLY



1:

Position Tripod so front of Tripod is facing you.

Next, insert the Long Bolt attached to machine through the right side of the Tripod and out the other side.



2:

Slide the Machine Housing (A) close to the Tripod, making sure the Tripod fits inside the Pre-Assembled Housing Clamp.



3:

Slide Flat Washer (1st) and Lock Washer (2nd) on to the Long Bolt, then tighten the Knob on to Long Bolt until machine is placed in the desired pitching position.

**\*NOTE:** A Rubber Washer May Be Between the Housing & Clamp. This Is To Help Hold the Housing In Place For Added Support.

# WARNINGS

IMPORTANT: THIS PRODUCT IS TO BE USED BY ADULTS ONLY.

KEEP HANDS AND ALL BODY PARTS AWAY FROM BALL EXIT! SERIOUS HAND AND BODILY INJURY MAY RESULT IF USED INCORRECTLY!

MAKE SURE EVERY PERSON AND EVERYTHING IS CLEAR OF PITCHING MACHINE BALL PATH!

TURN PITCHING MACHINE OFF TO THE "0" POSITION WHILE REFILLING THE BALL FEEDER (SOLD SEPARATELY) OR RETRIEVING BALLS!

MAKE SURE MACHINE IS PITCHING AT DESIRED TARGET BEFORE ALLOWING BATTER TO START BATTING!

POWER CORDS OVER 20 FT. CAN CAUSE MACHINE TO LOSE ENERGY & NOT OPERATE PROPERLY!

## WARNING!

- Only use lite-balls. Do not use real balls.
- Make sure no lite-balls are in machine before turning on.
- Make sure you **only** pitch 1 lite-ball at a time.
- This machine can pitch automatically. Be safe.
- Make sure lite-ball pitch path is clear before pitching any ball.
- Do not stand in front of machine.
- Do not operate in moisture.
- This machine may cause serious bodily injury if used improperly.
- For adult operation only.
- Machines that use a wheel to throw seamed lite-balls may throw inaccurately because of the seams and cause injury. No seamed lite-ball is recommended for use when batting.
- Always use a NOCSE approved batting helmet with face guard when batting.
- Never put body parts or foreign objects in machine or look in ball exit of this machine.

# OPERATION

## CAUTION!

USE HEATER PITCHING MACHINE LITE-BALLS FOR THE MOST ACCURATE PITCH POSSIBLE. PITCHING MACHINES THAT USE A WHEEL TO THROW BALLS WILL NOT THROW SEAMED BALLS AS ACCURATE BECAUSE OF THE SEAMS ON THE BALL.

**IMPORTANT: THIS PRODUCT IS TO BE USED BY ADULTS ONLY. MAKE SURE MACHINE IS TURNED OFF BEFORE ASSEMBLY! KEEP HANDS AND ALL BODY PARTS AWAY FROM BALL EXIT! SERIOUS HAND AND BODILY INJURY MAY RESULT IF USED INCORRECTLY!**

- Step 1: Ensure pitching machine is turned off.
- Step 2: Plug pitching machine into 3 prong power outlet (Make sure pitching machine wheel is not spinning.)
- Step 3: Aim pitching machine at desired target and make sure every person and everything is clear of pitching machine ball path.
- Step 4: Turn machine power switch to the "on" position.
- Step 5: Make sure ball is pitching in desired zone before allowing a batter to step up to hit.
- Step 6: Adjust pitch height by loosening the Pitch Height Adjustment Knob and Pitch Type Knob for your desired pitch. Re-tighten when done. Adjust ball speed by distance from batter or by ball type (See back page for ball types).
- Step 7: Once balls are done pitching, turn machine off before collecting balls to ensure no bodily injury occurs.



**Fast Balls**



**Drop Balls**



**Right Handed Curves**



**Left Handed Curves**



**Right Handed Sliders**



**Left Handed Sliders**

# ACCESSORIES

**(Sold Separately)**



Visit  
[www.HeaterSports.com](http://www.HeaterSports.com)



## **PowerAlley 40 MPH Lite Balls**

*6 Lite Baseballs Model# HSO14*

PowerAlley 40 MPH Lite Balls are designed for ages 3-8 or players who desire a slower pitch speed. These balls are optic orange color to help young players see the ball hit their bat. Soft enough for indoor or outdoor use, these balls are great for young players for perfecting their hand-eye coordination.



## **PowerAlley 60 MPH Lite Balls**

*6 Lite Baseballs Model# HSW14*

PowerAlley 60 MPH Lite Balls are designed for ages 8-12 or players who desire a mid-level pitch speed. These balls are optic white color to help young players see the ball hit their bat. Soft enough for indoor or outdoor use, these balls are great for young players for perfecting their hand-eye coordination.



## **PowerAlley 80 MPH Lite Balls**

*6 Lite Baseballs Model# HSG14*

PowerAlley 80 MPH Lite Balls are designed for ages 10-16 or players who desire a fast pitch speed. These balls are optic green color to help older players see the ball hit their bat. Recommended for outdoor use, these balls are great for advanced players for perfecting their hand-eye coordination.



## **PowerAlley 22' Home Batting Cage**

*22' x 12' x 8' Model# PA199*

PowerAlley Home Batting Cage is 22' x 12' x 8' and combines to allow you to create additional lengths of 44 feet, or longer. The PowerAlley attaches directly to the machine to provide maximum safety. Now, you can hit over 100 balls in under 15 minutes. Don't waste

time driving to find a ball park, retrieving balls, and getting frustrated. Get your PowerAlley Home Batting Cage today to become the best player you can be in the fastest time possible!

# Heater<sup>®</sup>

## SPORTS

95 West 650 South  
St. George, UT 84770  
1.800.492.9334  
[www.HeaterSports.com](http://www.HeaterSports.com)  
[MoreInfo@HeaterSports.com](mailto:MoreInfo@HeaterSports.com)