



Read This Before Operating

IMPORTANT

**DO NOT RETURN THE SCORPION MACHINE TO THE RETAIL STORE WHERE PURCHASED.
CALL TOLL FREE: (800) 492-9334.**

CUSTOMER SERVICE

TREND SPORTS is dedicated to your customer satisfaction. If you experience any trouble with the operation of the Scorpion Soft Toss Machine contact us at: (800) 492-9334 or go to our website at www.TrendSports.com.

SCORPION BALL RECOMMENDATION

Trend Sports recommends using Slider Lite-Balls, or Heater Baseballs in your Scorpion Soft Toss Machine.

WARNING: THIS PRODUCT IS TO BE USED BY ADULTS ONLY. MAKE SURE MACHINE IS TURNED OFF BEFORE ASSEMBLY! KEEP HANDS AND ALL BODY PARTS AWAY FROM BALL ENTRY AND EXIT! SERIOUS INJURY MAY OCCUR IF USED INCORRECTLY!

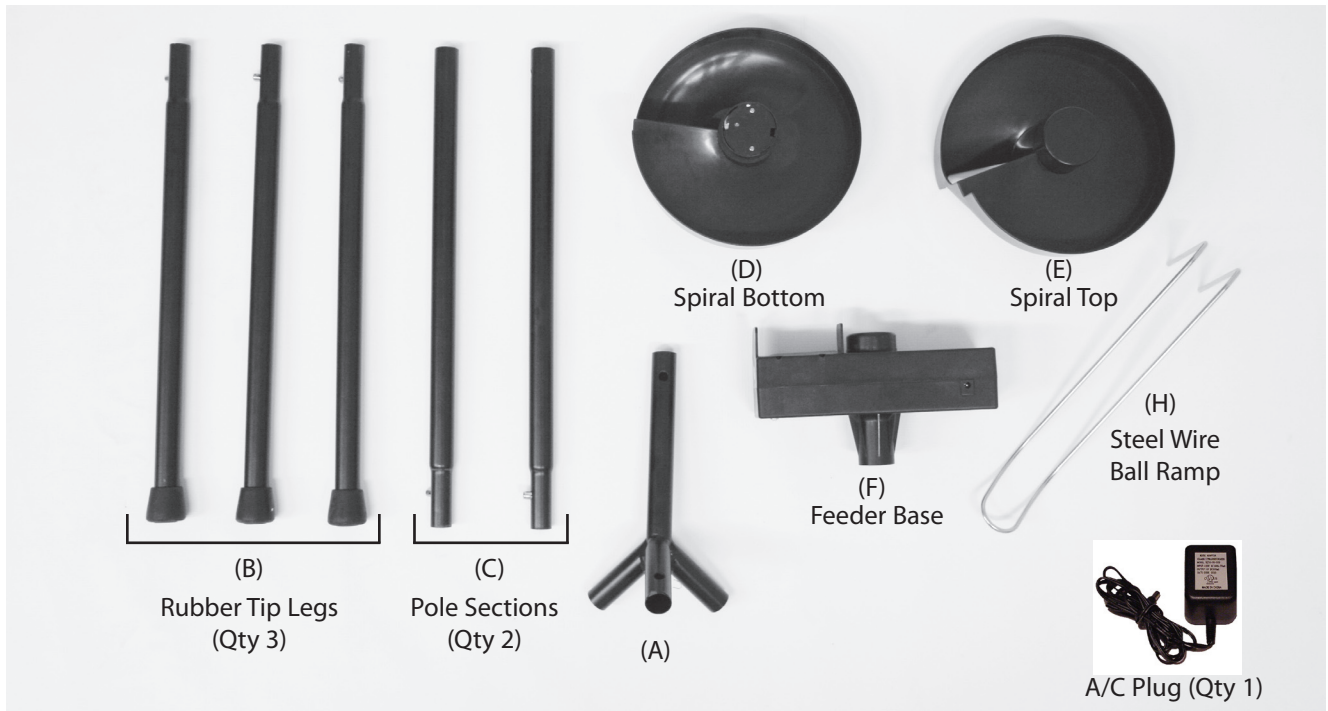
- Please be sure to read all of the instructions before using the Scorpion Soft Toss Machine to insure the machine is working properly.
- Parents: Your child should be made aware of potential dangers when using any electrical powered product.
- Never put your fingers into the Scorpion while it is operating.
- The Scorpion is not a toy and an adult should supervise children. It is very important that the batter make sure the area is clear before swinging bat.
- Stay clear of the ball opening while the Scorpion is operating.
Children should be advised of any danger and appropriate precautions should be taken.

WARNING!

Stay clear of ball exit when machine is operating. Keep hands and fingers clear of motor operation. Use under adult supervision only.

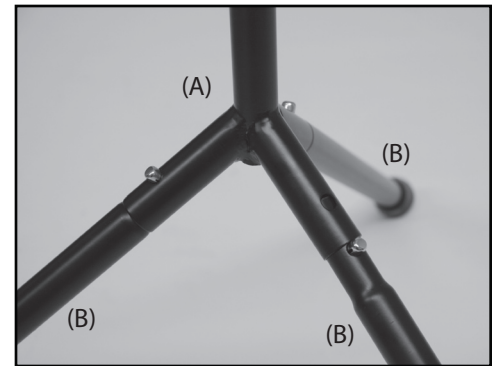


SCORPION PARTS LIST

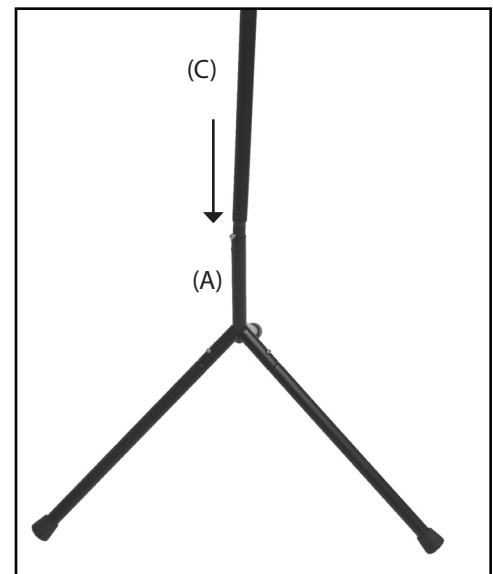


SCORPION ASSEMBLY INSTRUCTIONS

STEP 1: Locate Part (A) and insert Parts (B) into the tripod base as shown. *(Make sure the push-pins insert into the tripod base and lock.)*



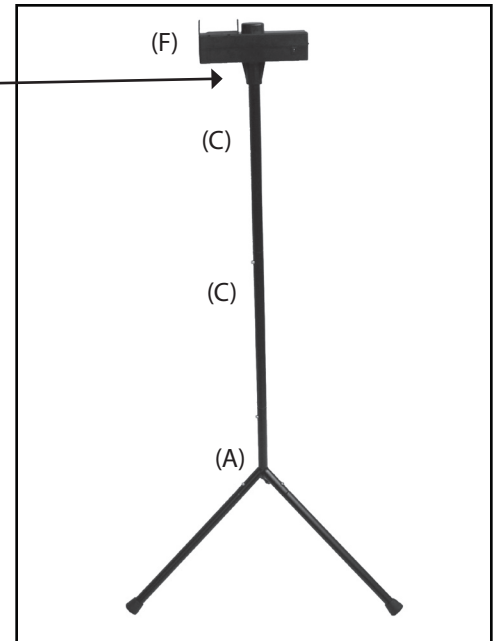
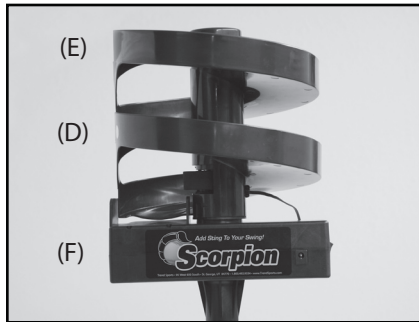
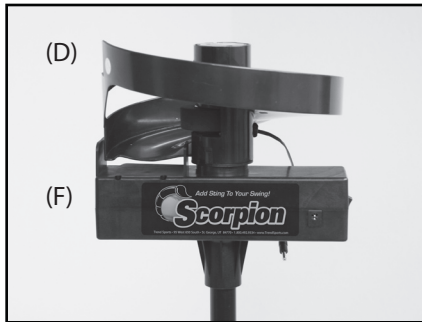
STEP 2: Insert Parts (C) into each other and then into Part (A), the tripod base, as shown. *(Make sure the push-pins insert into each section and lock.)*



SCORPION ASSEMBLY INSTRUCTIONS (Continued)

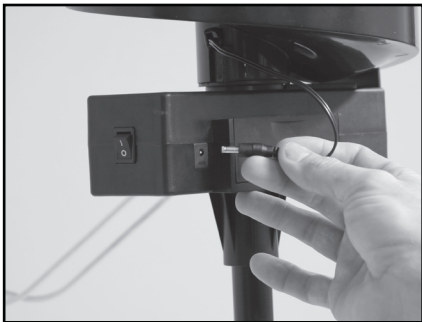
STEP 3: Take Part (F) and push it onto Part (C) base as shown.

STEP 4: Push Part (D) onto Part (F) by aligning the notches and pushing down firmly. Do the same for Part (E) onto Part (D) as shown.



STEP 5: Insert the Ball Ramp Part (H) into the holes where the balls exit the spiral on Part (F).

STEP 6: Plug the Ball Feeder wire from Part (D) into the socket on the back of Part (F). Plug the Power Adapter into the socket on the front on Part (F).



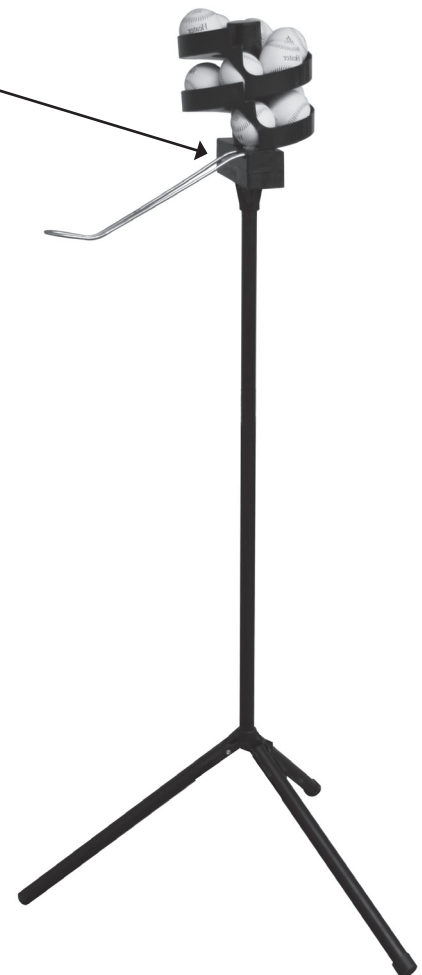
(Ball Feeder Power Socket)



(Power Adapter Socket)

Do not use any A/C Plug Adapter other than the one provided with the Scorpion.

8 hour battery packs are available to turn your Scorpion into a portable battery operated machine.



Make Your Scorpion Battery Operated

Call **1-800-492-9334** to order an 8 hour battery pack for your Scorpion Soft Toss Machine.



95 West 650 South • St. George, Utah 84770

PH: 800-492-9334 • PH: 435-656-1756

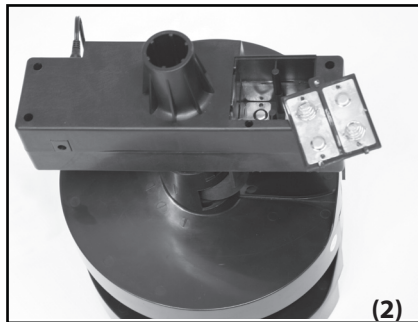
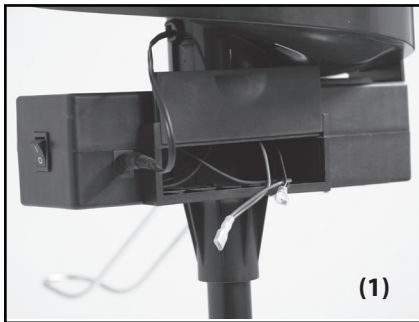
Fax: 435-688-0741

SCORPION OPERATION INSTRUCTIONS

Balls: The Scorpion will use any regulation sized ball. Trend Sports recommends Slider Synthetic Leather Lite-Balls, Slider Soft Lite-Balls, or Heater Baseballs

Power: The Scorpion Power Adapter will plug into any standard wall outlet. After connecting the Scorpion to electric or battery power, turn on the machine with the power switch located on the side of Part (F).

The Scorpion will also run on battery power. There are two separate battery compartments built into the Scorpion Soft Toss Machine.



NOTE: The Scorpion has two battery compartment. Compartment (1) connects to the *optional* Crusher 8 Hour Battery. Compartment (2), located on the bottom of Part (F), takes four C Batteries (*not included*)

Make Your Scorpion Battery Operated

Call **1-800-492-9334** to order an 8 hour battery pack for your Scorpion Soft Toss Machine.

