

CRUSHER BATTERY INSTALLATION INSTRUCTIONS

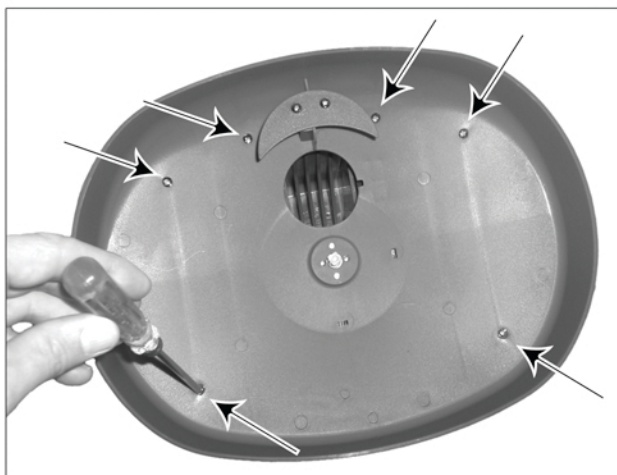
For Single 2 Hour Battery or Double 2 Hour Battery Installation

Step 1:

WARNING: Disconnect the power to the Crusher Pitching Machine while installing batteries! Failure to do so may result in bodily injury.

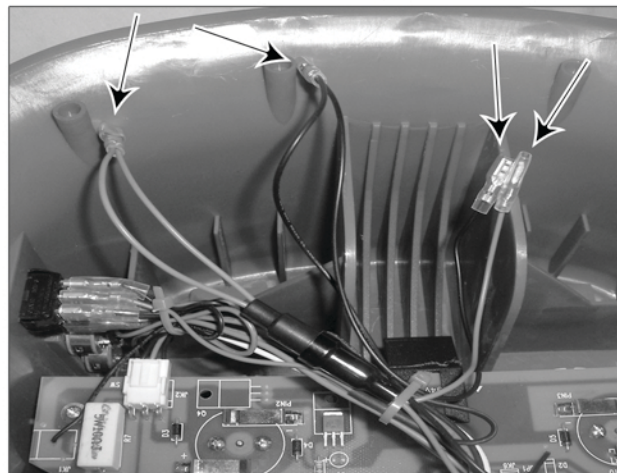
Step 2:

Using a screwdriver, remove the six screws (as indicated in the photos) that attach the ball feeder/hopper to the Crusher housing.



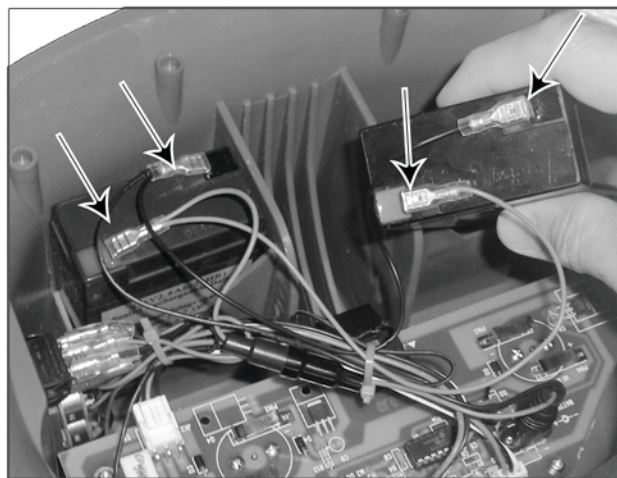
Step 4:

Locate the four battery wires as shown in the photo. (There are four battery connectors, two attached to red wires & two attached to black wires)



Step 5:

Connect the battery wires to the batteries as shown. Make sure to connect RED wires to the RED prong on the battery and the BLACK wires to the BLACK prong on the battery. **WARNING:** Do not allow the battery wires to touch the circuit board or the RED wires to touch the BLACK wires. This may result in damage to the pitching machine.



For single battery installation use one set of battery wires. Make sure the remaining wires do not touch each other, the circuit board or interfere with the ball feeder alley.

Step 6:

Place the batteries in the Crusher housing slots and reattach the ball feeder/hopper power cable to the circuit board. Reattach the ball feeder/hopper to the housing and tighten all six screws.

