



# OWNER'S MANUAL

## Crusher<sup>®</sup> Curve Mini Ball Pitching Machine

[www.HeaterSports.com](http://www.HeaterSports.com)

**Model No. CR99**

**Serial No. \_\_\_\_\_**

Write the serial number in the space above for reference.

### ACTIVATE YOUR WARRANTY

To register your product and activate your warranty, call 1-800-492-9334

### CUSTOMER CARE

For customer service inquiries, please call our toll free line at 1-800-492-9334.

### CAUTION

Read all precautions and instructions in this manual before using this product. Keep this manual for future reference.

Instructions Date: 10/2024

Version: PL001



**DO NOT RETURN TO STORE, CALL 1-800-492-9334**

# Read Before Operating!

## IMPORTANT

**DO NOT RETURN THIS MACHINE  
TO THE RETAIL STORE WHERE  
PURCHASED.  
CALL TOLL FREE: (800) 492-9334.**

### **WARNING: ONLY USE HEATER MINI-BALLS IN THIS MACHINE**

This Machine only uses Mini-Balls. These balls are incredibly accurate, long lasting, and produce the best performance in the machine.

THIS PRODUCT IS TO BE USED BY ADULTS ONLY. MAKE SURE MACHINE IS TURNED OFF BEFORE ASSEMBLY! KEEP HANDS AND ALL BODY PARTS AWAY FROM BALL ENTRY AND EXIT! SERIOUS HAND, EYE, AND BODILY INJURY MAY OCCUR IF USED INCORRECTLY!

- Please be sure to read all of the instructions before using the Pitching Machine to ensure the machine is working properly.
- This is not a toy and an adult should supervise children. It is very important the batter makes sure the area is clear before swinging a bat.
- Stay clear of the ball opening while this is operating. Although the balls are very light, they may cause eye damage or other injury may occur. Children must be advised of this danger and appropriate precautions should be taken.
- **DO NOT** use any type of ball other than Heater Mini-Balls in this machine.
- **DO NOT LOOK INTO THE FRONT OF THE MACHINE WHILE THE MACHINE IS RUNNING.**

# PARTS

*\*Replacement Parts Available by Calling Heater Sports*



Housing  
(A)



A/C Power Cord  
(C)



1 Dz. Mini Balls  
(D)

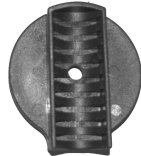
**\*NOTE: These Parts Are Pre-Assembled In Box**



Tripod  
Attachment  
Bolt  
(E)



Tripod  
Attachment  
(F)



Tripod  
Clamp  
(G)



Flat  
Washer  
(H)



Lock  
Washer  
(I)



Thumb  
Knob  
(J)



Machine  
Bolt  
(K)



Tripod  
(L)



Top Pole  
(No Pushpins)  
(M)



Top Leg  
(N) 3x



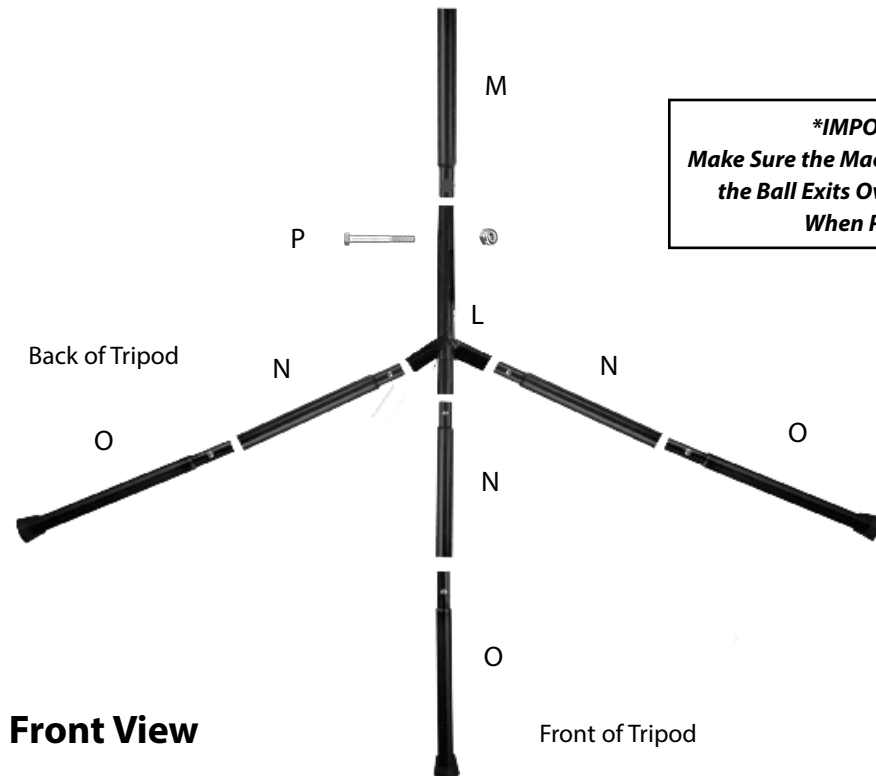
Bottom Leg  
(O) 3x



Top Pole  
Hardware  
(P)

# TRIPOD ASSEMBLY

Insert Top Legs (3x N) in to bottom of Tripod (L), making sure the push pins lock in place. Next, insert Bottom Leg (3x O) in to bottom of Top Legs (N), also making sure push pins lock in place. Lastly, insert Top Pole (M) into the top of Tripod (L), securing it tightly with Top Pole Hardware (P).



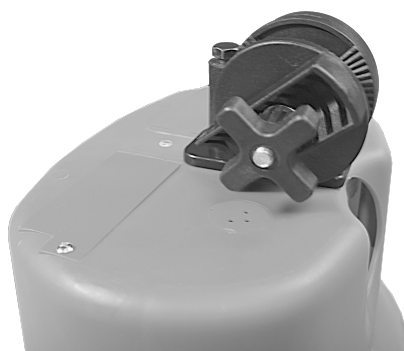
**\*IMPORTANT:**  
Make Sure the Machine is Mounted so  
the Ball Exits Over the Front Leg  
When Pitching!

# HOUSING CLAMP ASSEMBLY



1:  
Take Pre-Assembled  
Tripod Attachment and  
align it with the bottom  
of the Crusher Housing.

Make sure clamp aligns  
to housing as shown.



2:  
Locate and install  
Machine Bolt (K) to  
back of Clamp and  
tighten with a wrench.



3:  
Remove the Flat  
Washer, Lock Washer,  
and Knob from the  
Clamp and proceed to  
the next step.

**\*NOTE:** A Rubber Washer May Be Between the Housing & Clamp. This Is To Help Hold the Housing In Place For Added Support.

# HOUSING TO TRIPOD



Slide the housing bolt through the Tripod hole. Then, replace the Washer, Lock Washer, Knob (in that order) and then tighten.

**NOTE:** MAKE SURE TO FACE THE MACHINE OPENING OVER THE FRONT LEG OF THE TRIPOD.

## HOW TO USE



### To Power On

Locate the AC adapter and plug into the side plug underneath the machine settings. Plug the actual adapter into your wall or extension cord. To power on machine, turn bottom 2 dial knobs.



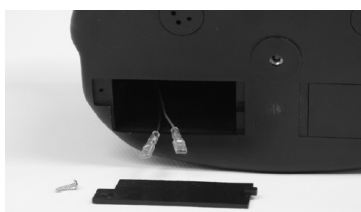
### Rechargeable Battery (Sold Separately)

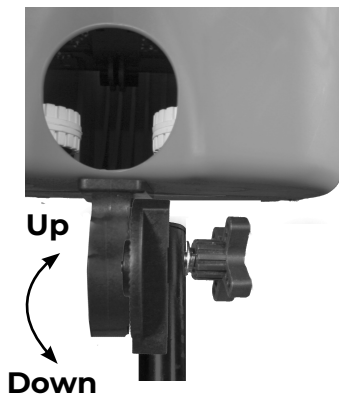
You may add up to 2x Crusher 4 Hr. Batteries to your Crusher to provide up to 8 full hours of power, making the Crusher totally portable.

If you have bought the battery, place the Crusher housing on a flat surface upside down, locate and remove either 1 or both of the battery cover screws.

Next, pull the red and black wires out of the housing and connect to the battery terminals. Place the battery back into the machine, and replace the cover.

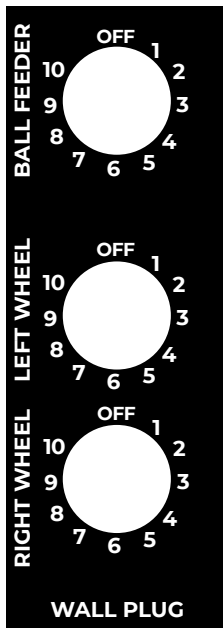
To charge the battery, plug the AC adapter into the Crusher & wall overnight.





### **Height Adjustment**

To adjust pitch height, simply loosen knob and tilt housing up or down to desired location. Then, re-tighten knob.



### **Ball Feeder Speed**

The Ball Feeder can feed a ball into the machine between 3-15 seconds depending on speed dial.

Fine tune the spinner speed by adjusting the top dial to your liking.

### **Pitch Speed**

The Crusher has 2 wheels, each independently controlled by knobs and labeled accordingly. Speed 1 is slowest, Speed 10 is fastest.

For fastball settings, set each dial to the same number. For left hand curve for example you would set the left wheel to 7 and the right wheel to 3. Play with different settings to your liking.

## **TROUBLESHOOTING**

### **Pitches Are Inconsistent**

The performance of the Crusher machine relies heavily on the consistency of the balls used in the machine. If you have some balls that pitch good, and others that do not, Heater recommends separating the good ones from the bad ones and use the good ones only.

### **Machine Won't Turn On**

In the event the Crusher stops working there is an in-line fuse inside the housing that can be replaced. Do not open the housing without first talking to a Heater Sports technician. They will instruct you how to safely access this fuse.

For any issue you experience with your Crusher, contact Heater Sports for live technical support/service.



95 West 650 South  
St. George, UT 84770  
1.800.492.9334  
[www.HeaterSports.com](http://www.HeaterSports.com)  
[MoreInfo@HeaterSports.com](mailto:MoreInfo@HeaterSports.com)